



MEDIA KIT

Company Overview

Who We Are

PACS Group Inc. (PACS) is a rapidly growing national platform investing in post-acute care facilities, professionals and ancillary services.

What We Do

PACS is revolutionizing the delivery, leadership, and perception of post-acute care and support services nationally, from elevating skilled nursing, assisted living, and memory care to pioneering advancements in senior living.

How We Do It

PACS creates value, trust, and confidence for our residents, patients, team members, and others we support through a locally led, centrally supported care model, entrepreneurial investment across the entire continuum of post-acute care, a respected management team with decades of hands-on experience and a diverse growth strategy driven by both organic growth and acquisitions.



Mission

To revolutionize the delivery, leadership, and quality of post-acute care nationally

Values



Love.

We recognize that love is the foundation for providing care to the vulnerable. We support our clients as they build a culture of loving care within and beyond their communities.



Excellence.

We look for and act on opportunities to improve every day.



Trust.

We act with integrity and expect the same of others.



Accountability.

We seek responsibility for our actions, attitudes, and mistakes.



Mutual Respect.

We treat others the way they want to be treated.



Commitment.

We are committed to providing exemplary, compassionate care to our residents and patients, and finding joy and satisfaction in our work as a team.

COMPANY OVERVIEW

Founding Story



PACS Group Inc. (PACS) took shape in 2013, when co-founders Jason Murray and Mark Hancock purchased a skilled nursing operator in southern California and assumed day-to-day operations of two skilled nursing facilities.

Jason and Mark both had hands-on expertise in skilled nursing operations and realized that patients, caregivers, clinicians and others needed more from the industry.

The common industry practice of centralized “corporate” control was draining resources from facilities, removing decision-making power from local administrators and diluting the essential “local” aspect of care.

Where many saw a dogged industry facing challenges ranging from negative stereotypes to staffing and regulatory issues, Jason and Mark saw a chance to change lives by redefining what skilled nursing and post-acute care should be in the nation.

They both quit their day jobs to venture into the ownership and operation of skilled nursing and post-acute care facilities, putting their own money and resources into growing the business.

Today, PACS has invested in 324 facilities and ancillary and support services across 17 states, and continues to bring its model of locally led, centrally supported care that balances access to a national network of support and resources with local decision making.



Our Work

With a deep understanding of skilled nursing and post-acute care built on decades of hands-on experience, PACS Services supports our team members, clients and communities with excellence by improving our core competencies every day.

We support clinical excellence

by connecting our clients with insights and resources that aid their delivery of the best, personalized clinical care to each of their customers.

We enable operational effectiveness

by acting as wise stewards of our resources while providing the highest level of service to our clients.

We engage our team members

by surrounding them with a community of like-minded peers and the tools they need to succeed.

We create and instill fun and enjoyment

in everything we do and include those we serve — from PACS Services team members to facility teams, patients and others.

COMPANY OVERVIEW

Fast Facts

2013

Year Founded

323

Number of Facilities

17

States Served

48,000

Number of Employees

31,900+

Number of Patients and Residents Served Daily

STANDOUT STATS

Currently, **235 PACS facilities** boast **4- and 5-star CMS quality ratings**, reflecting top-tier care.

In 2024, **53 PACS facilities** were featured **in prestigious lists** like Newsweek's "Best Nursing Homes" and U.S. News & World Report rankings.

Over 50 graduates complete our **Administrator-in-Training (AIT) program annually**, stepping into future leadership roles across the post-acute care industry.

In 2024, **PACS provided over \$1 million in donations** to our team members impacted by **Hurricanes Helene and Milton**.

14 PACS facilities received the **2024 AHCA/NCAL Bronze National Quality Award**, reflecting their pursuit of the highest care standards.

Leadership Team

Our leaders are respected and accessible, offering personal guidance and support derived from a breadth of facility-level and industry experience.

The PACS executive team is steeped in facility administrator experience, leading to our intimate understanding of the challenges facing post-acute care today at both the facility and industry levels. Key leaders across our network have substantial experience, with Regional Directors averaging 16 years, Regional Vice Presidents averaging 12 years, and Facility Administrators averaging 8 years. Above all, we are obsessively focused on delivering the highest quality of care possible and improving patient outcomes.

PACS CO-FOUNDERS



Jason Murray

Co-Founder, Chief Executive Officer, and Chairman at PACS Group, Inc.

Jason has more than 20 years of experience working as an executive in acute and post-acute healthcare settings and is a licensed nursing home administrator. He is the Chief Executive Officer and one of two founders/owners of PACS Group Inc., a rapidly growing national platform investing in the continuum of post-acute care, including post-acute care professionals, ancillary services, and more than 324 post-acute facilities in 17 states across the country.

Jason is a Fellow of the American College of Healthcare Executives (FACHE) and holds a master's degree in healthcare administration. He was named 2023 Mountain West Entrepreneur of the Year by Ernst & Young and was a finalist for their national Entrepreneur of the Year competition that same year.

He enjoys anything related to sports and athletics and stays active with his busy lifestyle, which comes with being married with five children.



Mark Hancock

Co-Founder and Executive Vice Chairman

Mark is the Executive Vice Chairman and one of two founders/owners of PACS Group Inc., a rapidly growing national platform investing in the continuum of post-acute care, including post-acute care professionals, ancillary services, and more than 324 post-acute facilities in 17 states across the country. In addition to over 20 years of experience as a finance professional Mark has previously worked as a licensed nursing home administrator in Utah, California, and Kentucky.

Prior to starting PACS, Mark worked for Fortune 500 companies in the auto and steel industries and as the treasurer for a \$20 billion financial services company. Mark was named a 2023 Mountain West Entrepreneur of the Year by Ernst & Young and was a finalist for their national Entrepreneur of the Year competition that same year. He is a Certified Treasury Professional (CTP) and holds a bachelor's degree in engineering from Brigham Young University, as well as a master's in business administration from Brigham Young University's Marriott School of Management.

When he's not focused on the skilled nursing industry, Mark enjoys spending time with his family, volunteering for his church, and expanding humanitarian efforts through his family's charitable foundation.

Leadership Team



Carey Hendrickson
Chief Financial Officer

Carey P. Hendrickson is an accomplished public company CFO with nearly four decades of financial leadership experience. He most recently served as Chief Financial Officer of U.S. Physical Therapy, Inc. (NYSE: USPH), and previously as Executive Vice President and Chief Financial Officer of Capital Senior Living Corporation (NYSE: CSU, now Sonida Senior Living, NYSE: SNDA), and as Senior Vice President, Chief Financial Officer and Treasurer of Belo Corp. (NYSE: BLC). Mr. Hendrickson serves on the Board of Regents of Baylor University, including as Vice Chair of the Audit, Compliance and Risk Management Committee, and as Chairman of the Board of Advisors for Baylor's School of Music. He holds a BBA in Accounting, cum laude, from Baylor University and an MBA in Finance, with honors, from the University of Texas at Arlington.



Josh Jergensen
President and Chief Operating Officer at PACS Group, Inc.

Josh is the President and Chief Operating Officer at PACS, a national leader in post-acute care back-office and consulting resources that enable facility-level professionals and clinicians to focus on patient care, well-being and quality of life. He is also a licensed nursing home administrator and approved preceptor in California, with more than 10 years of experience operating complex multi-story skilled nursing facilities. Since 2014, he has provided operational support to all the facilities within the PACS portfolio.

Josh has a bachelor's degree in Business Management from Brigham Young University's Marriott School of Management and a master's degree in Healthcare Administration from the University of Southern California.

Though much of his time and efforts are spent recruiting and developing top-level management, improving systems & processes and promoting business development, he always makes time for his family (wife and four kids) and a nice round of golf!



Michelle Lewis
Chief Accounting Officer

Michelle has served as our Chief Accounting Officer since January 2023. Since joining our company in July 2018, she has served in various roles of increasing responsibility, including as our Controller. Prior to that, Michelle, who is licensed as a Certified Public Accountant, owned and operated Michelle Lewis Accounting Services, PLLC, a certified public accounting firm, and also provided controller functions at a privately held healthcare organization, from January 2008 to May 2015. She received a B.S. in Business Administration from the California State University East Bay. Michelle has worked in the skilled nursing industry in various functions since 1997.

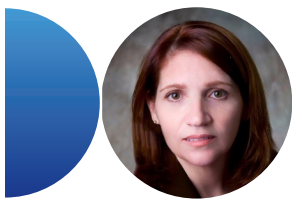
Michelle is married with two adult children and two spoiled dogs. She enjoys traveling, long walks/hikes with her husband, a newfound interest in snowshoeing, watching crime documentaries and is an avid reader of all things fiction.

Leadership Team



John Mitchell
Chief Legal Officer and Secretary

As our Chief Legal Officer and Secretary, John manages the company's legal department. He earned his bachelor's degree and juris doctorate, magna cum laude, from Brigham Young University. John served as Vice President, Legal at HCP, a NYSE traded healthcare-focused real estate investment trust, and as Senior Vice President, Legal, and Chief Compliance Officer, at Skilled Healthcare Group, a NYSE-traded skilled nursing company, prior to joining us in 2017. He spent the first portion of his career at an international law firm with a practice focus on corporate, finance and mergers, and acquisitions.



Kelly Priegnitz
Chief Compliance Officer

Kelly Priegnitz joined PACS as Chief Compliance Office in December 2025, the latest step in a decorated compliance and legal career. She joined PACS following five years at Pinnacle Treatment Centers as Executive Vice President and Chief Compliance Officer. Prior to joining Pinnacle, Kelly served in legal and compliance leadership positions with Trilogy Health Services, Healogics, Kindred Healthcare and Sun Healthcare, roles in which she oversaw compliance and risk management within multiple areas of healthcare.

She is a veteran of the United States Air Force, and during basic training, she met her husband Elmer, with whom she has five sons, including a set of triplets. Remarkably, when her children were 11, 9, 2, 2, and 2 years old, she decided to pursue her dream of becoming a lawyer and graduated from the University of Oklahoma College of Law in 2000, finishing in the top third of her class.



Trent Bingham
Chief Human Resources Officer

Trent joined PACS in November 2025, bringing more than two decades of human resources and management experience to the organization.

Throughout his career, Trent has held HR leadership roles across the healthcare industry—including pharmaceuticals (Eli Lilly & Company), medical devices (Edwards Lifesciences), and medical diagnostics (Renalytix), and began his career in patient care as a certified nursing assistant. His expertise spans HR strategy, Six Sigma, public accounting, and global business leadership, complemented by six years living and working abroad in Japan and Ireland. Trent earned an MBA from Brigham Young University, a bachelor's degree in accounting from Utah State University and his CPA license in California. Outside of work, his passion is exploring the backcountry of Utah's mountains and mentoring young people.

PRODUCTS & SERVICES

Business Model

The proven PACS model leverages a balance of support and autonomy, enabling both excellence in care and professional success.

1 Our administrators know what is best for their community and their markets because of our facility-forward model and best practices guidance

Together with local leaders, we bring a fresh, energetic approach to post-acute care that drives talent, tools and outcomes.

2 We support facility leaders in developing relationships with nearby community leaders, ranging from veteran and patient advocate groups to local chapters of industry organizations and local, state and federal officials.

3 We value regional density that drives quality and performance due to market-specific understanding of patient needs and regulatory factors.

Our development of regional density includes expanded talent pipelines, availability of tools and resources, and promotion of better outcomes based on regional knowledge of local regulations and population needs.

4 Our technology focus delivers real-time data access to caregivers and administrators, allowing delivery of the best care at the right time.

Clinical and administrative leaders – as well as patients and others – across our network benefit from a single EHR across all facilities, a standardized back-office ERP and best-in-class proprietary dashboards, data cubes and FP&A tools.

5 We keep our patients' comfort top of mind with an ongoing commitment to maintenance and renovations of our facilities.

PRODUCTS & SERVICES

Care Offerings

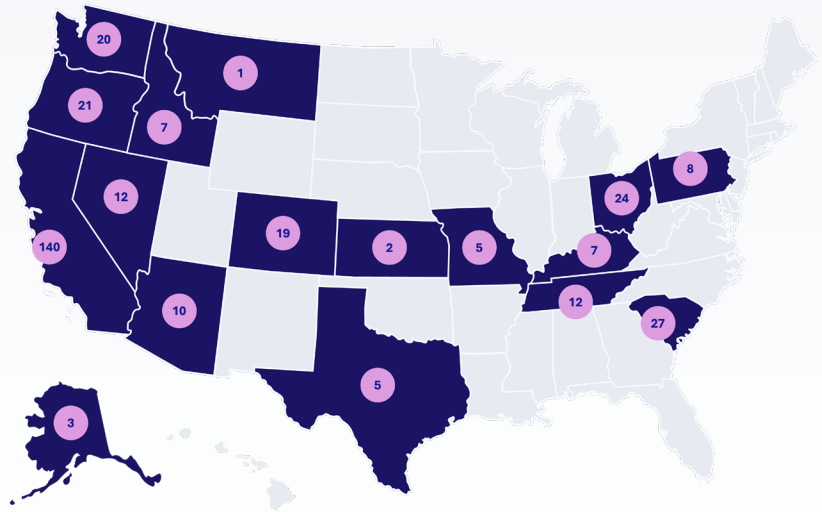
We strive to be the employer-of-choice for senior living and post-acute care professionals by surrounding them with a community of like-minded peers and the tools they need to succeed.

Each of the PACS independently operated facilities is supported by PACS Services to help local care teams better focus on what matters most: the care, well-being, and quality of life of their patients and residents.



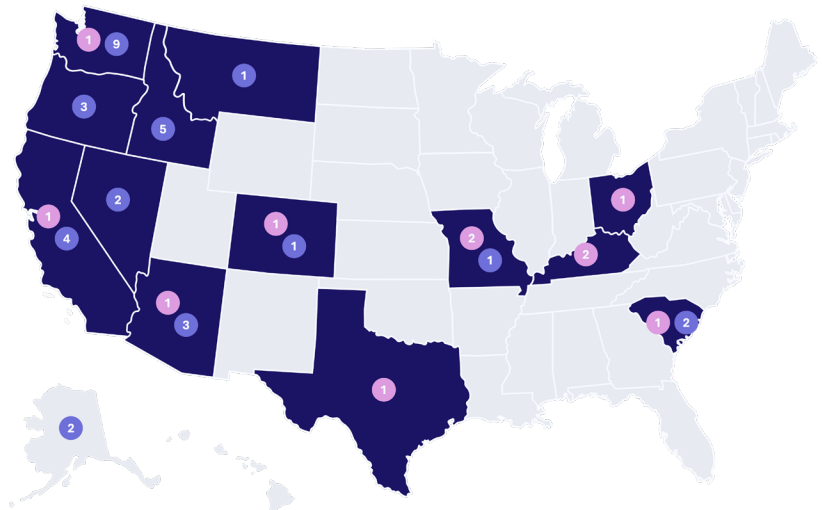
Post-Acute

PACS Post-Acute elevates post-acute care across the country by delivering clinical excellence and personalized care and by honing operational effectiveness.



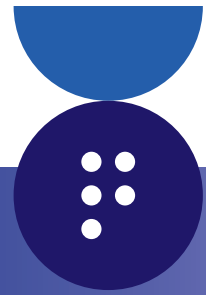
Senior Living

We elevate senior living across the country by helping community leaders hone operational effectiveness that results in excellent resident experiences and personalized care options.



PRODUCTS & SERVICES

Care Offerings



PACS Services

PACS Services brings years of hands-on experience to post-acute care support, enabling supported facility leadership teams and staff to reduce time spent on administrative tasks and focus on patient care, well-being, and quality of life. By providing technological and human resources tools and guidance; equipping and empowering facility leaders and their teams to make local decisions based on patient needs and community-level factors; and staying agile and innovative, we elevate the delivery of local care.

Core Competencies

Clinical Excellence. We help our affiliated facilities connect their patients with insights and resources that aid their delivery of the best, personalized clinical care to each of their customers.

Operational Effectiveness. We recognize that acting as wise stewards of our resources is essential to providing the highest level of service to our clients.

Employee Engagement. We value our employees as our most important resource by surrounding them with a community of like-minded peers and the tools they need to succeed.

Key Services Offered



Recruiting & Staff support



Finance & Accounting



Technology & Creative Services



Clinical Training & Support



Legal & Compliance



PRODUCTS & SERVICES

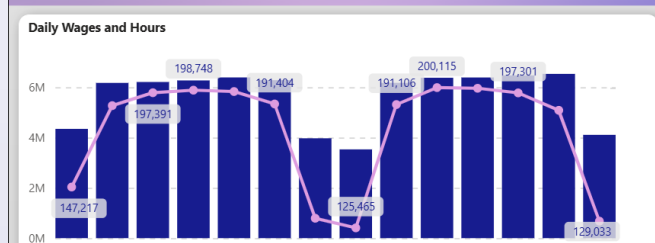
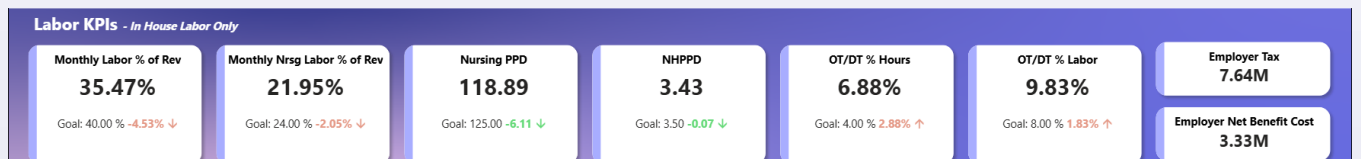
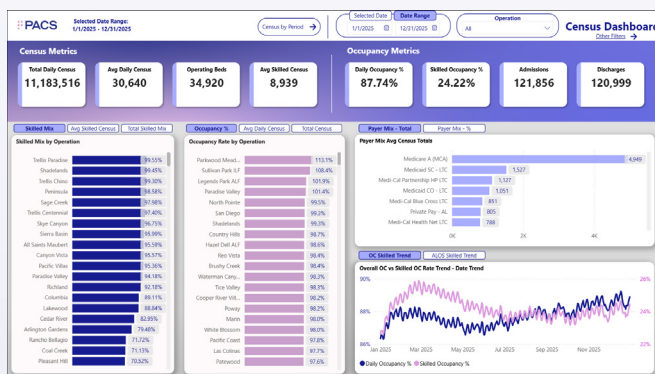
Technology & Innovation

The PACS Dashboard rollout marked a significant milestone in our journey to leverage data for improved care outcomes and smarter decision making.

Please note that the metrics displayed in screenshots of the Dashboard platform below are proprietary, and do not include actual patient data or information. These are meant to serve solely as examples of how the platform looks and functions.

This next-generation platform aggregates data from multiple sources – our EMR, enterprise cloud solution, and more – into a centralized data warehouse. From there, the information is processed through Power BI to generate intuitive visualizations like graphs, drill-down charts, and trend analyses. Building on the foundation of the PACS Dashboard prototype, this latest iteration reflects a complete infrastructure overhaul, ensuring stronger data integrity and reliable integration, even as it computes increasingly complex inputs. The PACS Dashboard has evolved to include advanced clinical monitoring capabilities. Facility teams are now able to track key care indicators such as fall rates, pressure ulcers, and other care patterns by time of day, allowing for a nuanced understanding of events across shifts.

Tracking this clinical data helps our teams improve the quality of care by extracting key data points and presenting them with clear, actionable insights. The build and use of our dashboard is a way PACS proudly embraces innovation. Our team knew this platform would be essential as the organization grows. The fact that it is completely scalable today represents a forward-looking investment from the organization and commitment to harnessing data to do good. We've received positive feedback about the data's accuracy and usefulness and have also refined some of the more highly detailed areas of the platform, so leaders don't have to digest and consume weighty datapoints. Rather, we want them to have simple views of information that make for streamlined decision making. Our team has set up the platform so that it's easy to make updates and adjust in real-time, adapting to the needs of those who use it most.



Labor Metrics by Department/Employee

Department	Amount	Amount PPD	Hour	Hour PPD	Amount OT/DT	Hour OT/DT
Nursing	48,852,864.74	118.89	1,484,114.39	3.61	6,476,876.35	135,221.05
Administration	5,787,992.45	14.09	139,989.25	0.34	167,234.87	4,060.42
Dietary	5,309,100.93	12.92	245,392.70	0.60	367,716.69	12,033.62
Physical Therapy	4,262,441.16	10.37	88,133.68	0.21	83,955.68	1,213.51
Occupational Therapy	3,505,056.50	8.53	73,319.57	0.18	82,252.95	1,110.73
Housekeeping	2,627,504.18	6.39	144,168.92	0.35	153,240.14	5,457.27

PRODUCTS & SERVICES

Affiliations & Partners



In collaboration with the American Health Care Association and National Center for Assisted Living (AHCA/NCAL), PACS leaders serve as a force for positive, national change across the post-acute care continuum. From participating in local and national policy programs and providing information, education, and administrative tools that enhance quality of care at the facility level, to speaking at national conferences and participating within the organization's Board of Directors, PACS partners with the AHCA/NCAL to advocate for the continuing vitality of the post-acute care community.

In addition, PACS leaders sit on numerous committees within the AHCA, ensuring that our model of locally led, centrally supported post-acute care benefits the broad industry:

Michelle Lewis:

AHCA Audit Committee

Sally Cantwell:

AHCA Regional Multifacility Council

Brooks Stevenson:

AHCA Customer Experience Committee

AHCA Political Action & Involvement Committee

PRODUCTS & SERVICES

Community Relationships



We believe that the power of balancing local autonomy with national support allows our people to deliver a world-class experience catered to the specific needs of those we serve. Our longstanding commitment to philanthropy, community service, and keeping healthcare local is rooted in connecting hearts to hand and charging each of our 50,000+ team members to take an active, personal role in delivering our mission.

We empower our staff to embrace the communities they operate and deliver care in, providing them with the flexibility and funding they need to engage in efforts that make a real difference in the lives of real people. Each of our more than 320 facilities have taken their own approach to engaging with their surrounding communities – from holiday and cultural celebrations to veterans’ support programs. We support local leaders in developing relationships with key community leaders, ranging from veteran and patient advocate groups to local chapters of industry organizations and local, state, and federal officials.

We take pride in investing in our communities because they invest so much in us. We are deeply grateful for their continuous trust and support, and the opportunity to deliver excellent, loving care to their most vulnerable. As we expand our services to new regions, we’re instituting new ways to provide for our uninsured patients and residents, in addition to partnerships with local hospitals and organizations.

Charity Care

Providing excellent, loving care to all those who need it in our community remains at the heart of our work today. In 2024, PACS donated over \$52 million in unreimbursed care. PACS facilities across our network have engaged strong partnerships with local hospitals, creating a pipeline that ensures each of our patients and residents have access to the right care at the right time.



Philanthropic Partnerships

PACS partners with numerous organizations both within our local Utah community and nationally, bringing our commitment to compassionate, loving care and service to individuals beyond our facility walls

neighborhood house



MEDIA KIT

Press Ready Boiler Plate

PACS Group, Inc. is a holding company investing in post-acute healthcare facilities, professionals, and ancillary services. Founded in 2013, PACS Group is one of the largest post-acute platforms in the United States. Its independent subsidiaries operate 324 post-acute care and senior living facilities across 17 states, serving over 30,000 patients daily. References herein to the consolidated “Company,” as well as the use of the terms “we,” “us,” “our,” “its” and similar verbiage, refer to PACS Group, Inc. and its consolidated subsidiaries, taken as a whole. PACS Group, Inc. and its subsidiaries that are not licensed healthcare providers do not provide healthcare services to patients, residents or any other person, and do not direct or control the provision of services provided or the operations of those provider subsidiaries. All healthcare services are provided solely by its applicable subsidiaries that are licensed healthcare providers, under the direction and control of licensed healthcare professionals in accordance with applicable law. More information about PACS is available at <https://IR.pacs.com>.

Recent Media Coverage

McKnavts Long Term Care News

- [The PACS revolution: Inside the plan to turn more nursing homes into hospital extension](#)
- [McKnight’s 2026 Outlook Part 4: Providers see opportunities amid healthcare transformation, strong market indicators](#)
- [UPDATED: PACS announces key metrics, predicts ‘record revenue’ with updated SEC filings](#)

Skilled Nursing News

- [PACS Plans to Rev Up M&A Engine for 2026, Focus on Higher Acuity Care in Nursing Homes](#)
- [5 Skilled Nursing Providers to Watch in 2025](#)

Utah Business

- [4 business lessons from PACS co-founder Jason Murray, Sept 2024](#)

Recent Press Releases

- [PACS Group to Restate Certain Previously Issued Financial Statements](#)
- [PACS Group Completes Acquisition of Skilled Nursing Facilities in Tennessee](#)
- [U.S. News & World Report Honors 36 PACS Communities](#)
- [Seventeen PACS Post Acute Locations Honored By Newsweek Magazine](#)
- [PACS Group Provides Preliminary Third Quarter Operational Metrics](#)

MEDIA KIT

Quote Library



Our success is driven by our belief in local, community-driven care, empowering our administrators to do what's best for their patients and residents as supported by comprehensive resources and best practices.”

Jason Murray, Co-Founder, Chairman, and CEO



Our recent growth illustrates an important element of our business model in action. We consider acquisitions, both large and small, when we believe the PACS mission can thrive in the local markets.”

Josh Jergensen, President and COO



We work extremely hard to make sure that the residents are having fun with us. Working together and including the residents has continuously helped us to have multiple deficiency-free annual state surveys and consistently positive outcomes.”

Mark Hancock, Co-Founder, Executive Vice Chairman, and Interim Chief Financial Officer at PACS Group, Inc.



Administrators are the lifeblood of PACS. Our locations thrive only because of our local leaders and local teams.”

Clark Nelson, Senior Vice President of Operations, Western Region



Colonial Vista is the longest-standing assisted living in Wenatchee, so it is part of the community. Our team has done an amazing job with creating events and bringing it back into a positive limelight. We want people to talk about all the fun things happening here. We want to be the resource hub of Wenatchee, Washington, because there are so many different stories associated with Colonial Vista.”

Brooke Capps, Executive Director, Colonial Vista Senior Living

MEDIA KIT

Quote Library - Google Reviews



Lakewood Post Acute and Rehabilitation

My dad has been at Lakewood postacute rehab for over a week and most of the nurses are kind and attentive. Thank you to all the nurses especially night staff. They are awesome and love the chats we get to have with all of them.”



Westgate Gardens Care Center

My dad, who is 89, was exceptionally well cared for during his stay there. The staff really love what they do and it shows. There are very happy patients at Westgate. Thank you!”



Parkway Assisted Living

I recently had to move my grandma into an assisted living and decided to go with Parkway assisted living and I couldn't be happier! The staff is wonderful and my grandma is very happy there!”



McKinley Park Care Center

My client was admitted quickly. Papers were in order. The rooms were clean. She was met with her care team within five minutes.”



Tice Valley Post Acute

So kind, caring and compassionate! Thank you for treating my mother with so much respect.”



Sunset Villa Post Acute

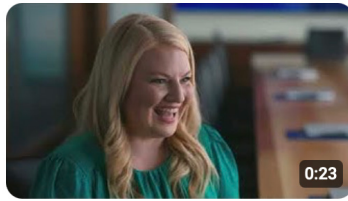
I have been in Sunset for the second time to visit our resident, who has been on rehab rehabilitation. My experience has been pleasant from walking into a welcome receptionist to professional and helpful social services case managers.”

MEDIA KIT

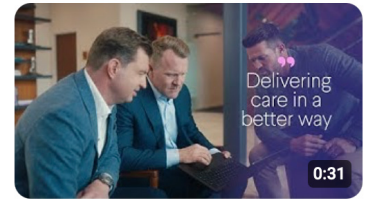
Video Library



[A New Chapter in Post-Acute Care: PACS Highlights of 2024](#)



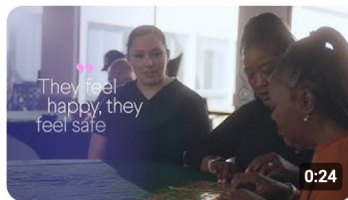
[Personnel Perspective - Lindsey](#)



[PACS Founding Story](#)



[Personnel Perspective - Sal](#)



[Community Conversations - San Diego Post Acute](#)



[Community Conversations - Linley Park](#)



[Personnel Perspective - Benton](#)



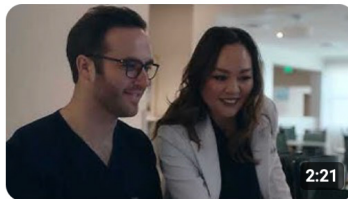
[Community Conversations - Brushy Creek](#)



[Facility Spotlight - Pacific Villas](#)



[The PACS Team](#)



[PACS Services](#)



[Healthcare Elevated](#)



[About PACS](#)



[PACS Administrator-in-Training Program](#)



[PACS Administrator-in-Training Development Program](#)

MEDIA KIT

LAST UPDATED FEBRUARY 2026

CONTACT INFO

Brooks Stevenson

VP Corporate Communication

90 S 400 W #700
Salt Lake City, UT 84101

Phone: (801) 447-9829

T: 385-988-3596

contact@pacs.com
IR@pacs.com

